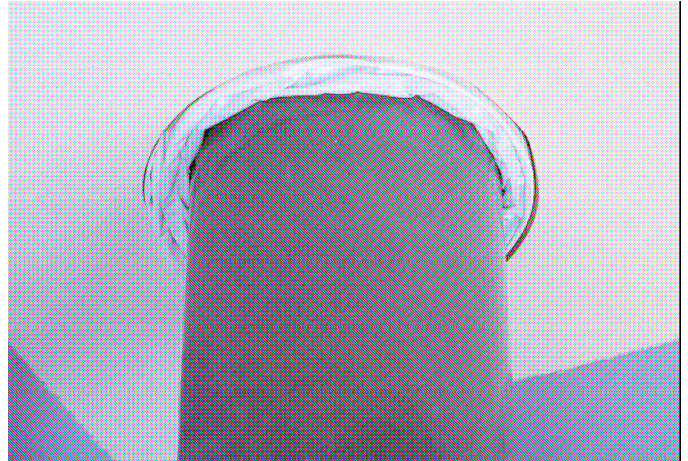




# OPAL PIPE WARPS

## INSTALLATION METHOD

By removing the adhesive strip cover (do not remove the plastic sleeve) and pulling the overlap of plastic sleeve around the pipe, the self-adhesive strip, when secured, will allow the installer to push the complete wrap evenly into place around the plastic pipe within the concrete or masonry wall or floor. The pipe wrap must be installed so that the whole of the pipe is contained within the wall or floor space, and the outermost part of the pipe wrap is 5-10mm within or below the surface of the wall or floor. (See diagram.)



Once in place, a thin layer of mortar 5-10mm deep can be sealed around the annular space between the wall or floor and the plastic pipe. This will keep the pipe wrap in place, especially when used in a floor application.

For use in floor situation, the annular space left above the pipe wrap must be back-filled using an approved fire rated mortar.

**OPAL** pipe wraps are available for uPVC plastic pipes only and can only be used within concrete floors or masonry or block work walls. They are available for pipes up to 160mm dia. and are fully tested for integrity and insulation for the both two and four hours protection.