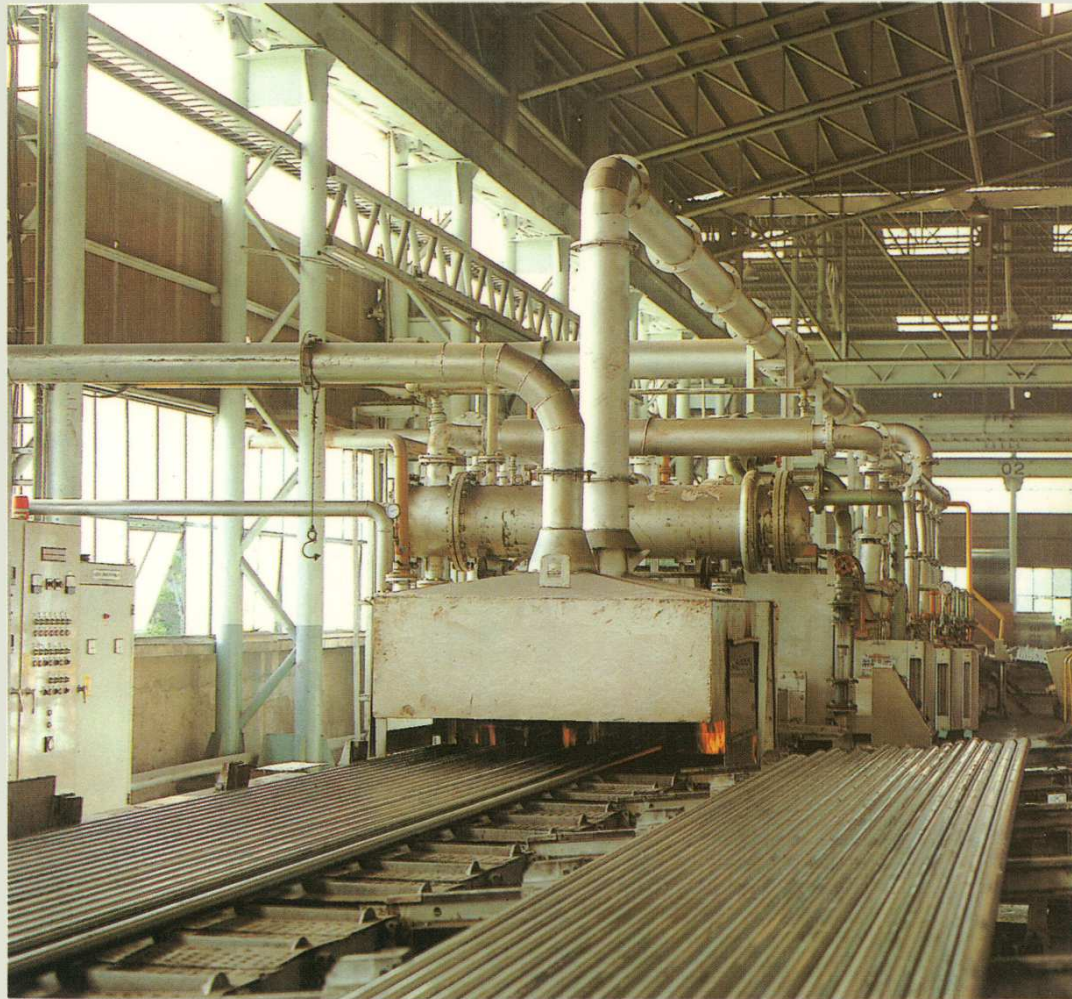


# SeAH (PSP)

## STEEL PIPE & TUBE

General Purpose in Building Services  
to BSEN 10255 and BSEN 10217-1



PUSAN STEEL PIPE





# FROM OUTSET TO UPSURGE

- 1960** Pusan Steel Pipe Ind. Co., Ltd. established in the port city of Pusan.
- 1975** Company name changed to Pusan Steel Pipe Corporation.
- 1978** Pusan Pipe America set up in Los Angeles.
- 1978** Pusan Steel Pipe completed Pohang Plant 1.
- 1979** Pusan Steel Pipe Transport Division reorganized as Haiduk Transportation Co., Ltd.
- 1979** Korea Bundy Corporation established with technical and financial input from the U.S., Australia and Japan.
- 1980** Completion of Pohang Plant 2 for Pusan Steel Pipe.
- 1981** Received US\$100 Million Export Tower and Medal of Industrial Service Merit, Gold Tower.
- 1983** Pohang Plant 3 completed by Pusan Steel Pipe.
- 1985** Began production of pre-insulated pipe in technical collaboration with Eco-Pipe of Sweden.
- 1985** Alloy Rods Korea Corporation formed as technical and capital venture with Alloy Rods Corporation of the U.S.
- 1985** Haeyang City Gas Co., Ltd. became a PSP affiliate.
- 1986** Reorganized Pusan Steel Pipe Machinery Division as Haiduk Machinery Co., Ltd.
- 1988** SeAH Special Steel Corporation joined Pusan Steel Pipe as an associated firm.

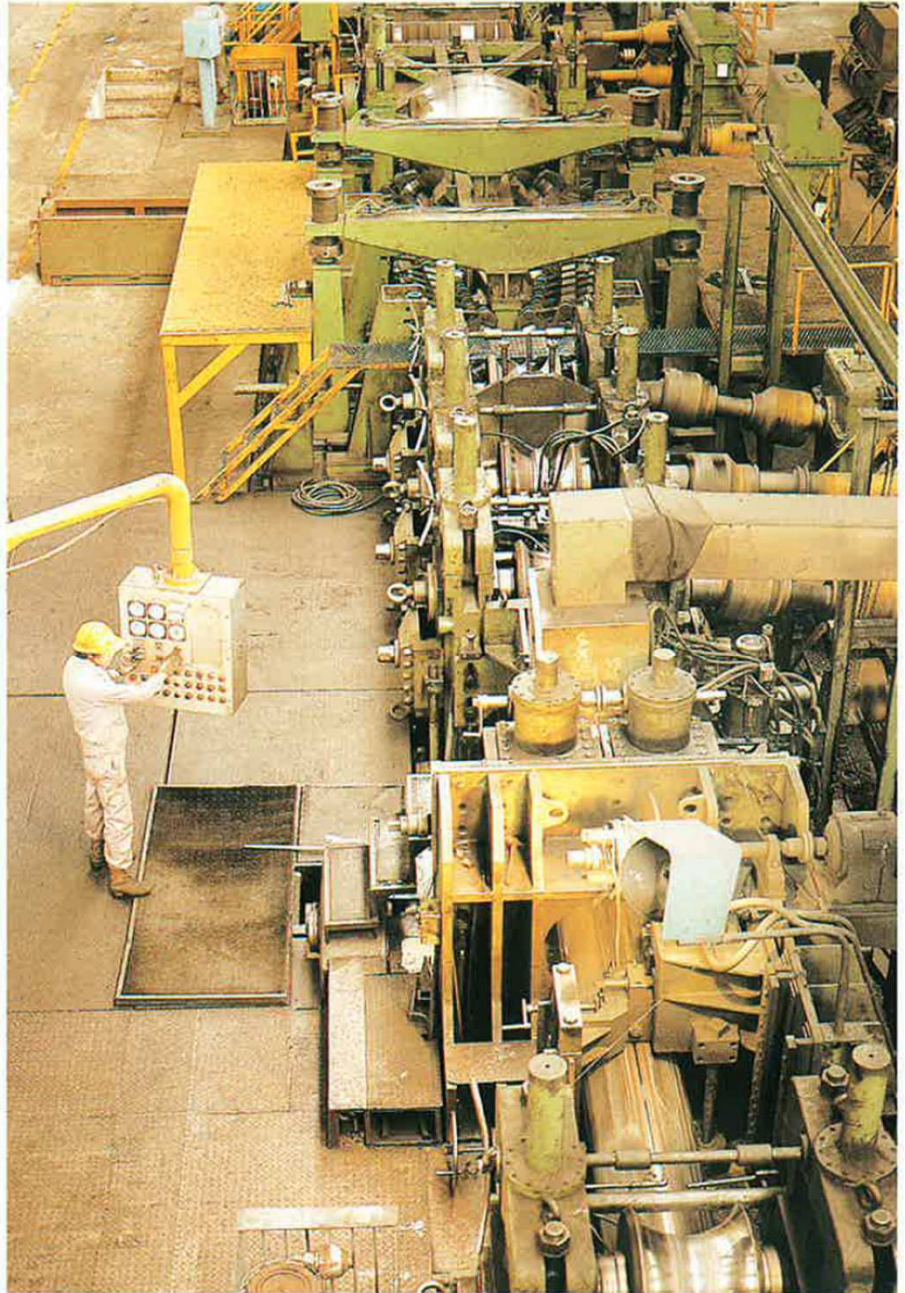


- 1989** Haiduk Transportation Co., Ltd. changed its name to ASIA Transportation Co., Ltd.
- 1990** Stainless steel pipe mill went into operation in Seoul Plant.
- 1991** TELKO Ltd. established as a joint venture with Telemecanique S.A. in France.
- 1991** Large diameter manufacturing mill (O.D. 24"~82") went into operation.
- 1991** PSP Japan branch office transferred to Tokyo from Osaka.
- 1992** KOAM Communication Corporation joined PSP as an associated firm.
- 1993** Obtained ISO 9001 Certification for quality system.
- 1996** Company name changed to SeAH Steel Corporation.

## Pipe for General Uses

Products in this classification are indispensable for access to both the necessities and the amenities of modern-day life.

Purposes on many levels are beneficially served by this important category of commodities. Among them are pipes for plumbing, industrial water, irrigation, reservoirs, fire hydrants, gas/oil transfer, and ship conduits.



# Carbon Steel Pipe & Tube for Heat Transfer

End-to-end control over all variables, from raw material to final delivery, is what guarantees users of PSP carbon steel pipe the maximum possible level of value received, regardless of the intended mode of heat transfer.

Steel tube products by PSP for heat exchangers and boilers are not in the least inferior in comparison to seamless pipe.

Heat exchangers in chemical industries employ our tubes for water, smoke, preheating and superheating applications. For petroleum industries, we also supply tubes used in heat exchangers plus condenser and catalyzer tubes.

In addition, all products undergo perfect heat treatment for finer machinability, while capping at each end prevents internal contamination.

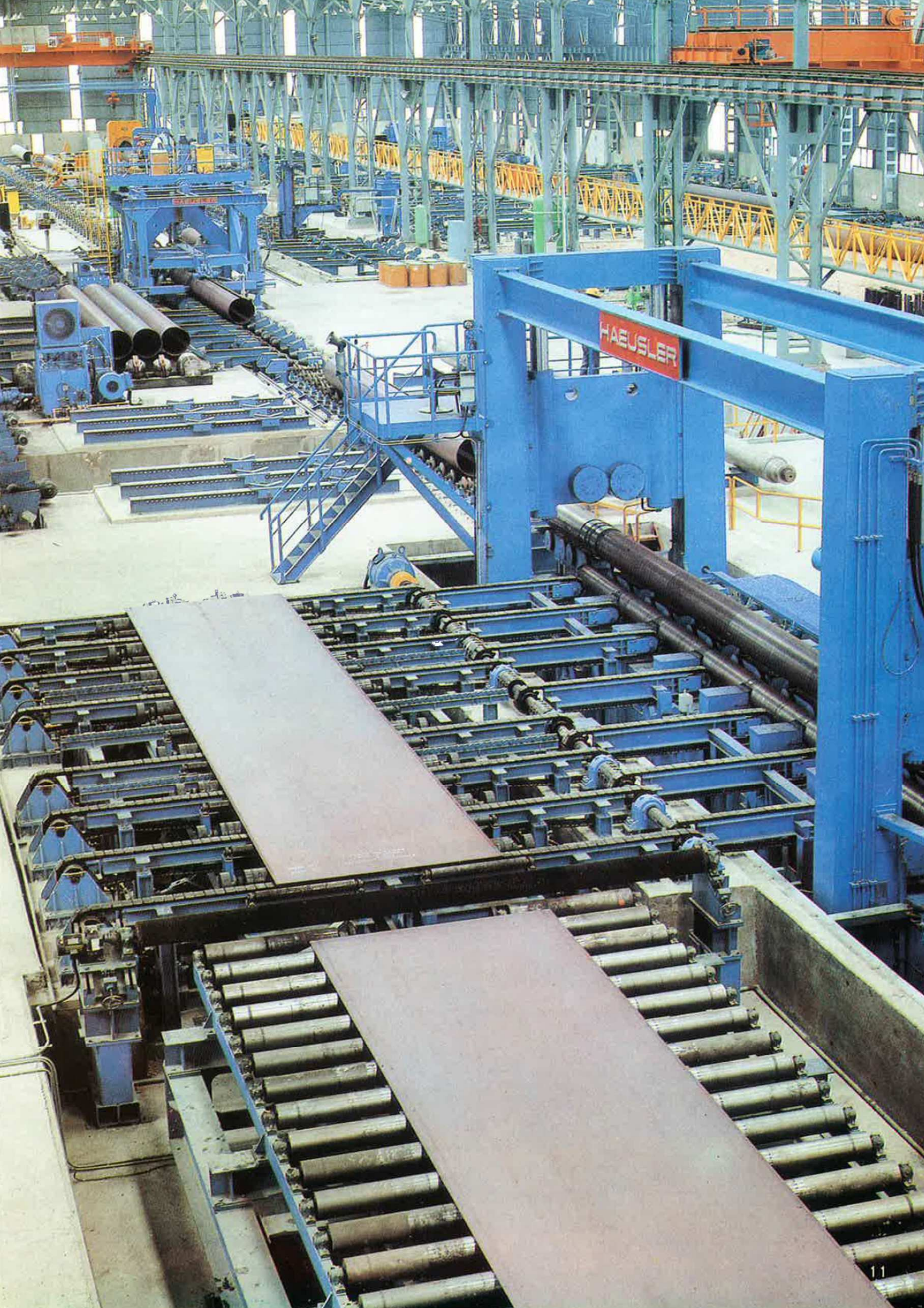


## Main Products

Carbon Steel Pipes for Ordinary Piping	<ul style="list-style-type: none"> <li>○ Pipes for Water Piping</li> <li>○ Pipes for General Ordinary Piping</li> </ul>	<ul style="list-style-type: none"> <li>▶ For City &amp; Industrial Water, Irrigation &amp; Agriculture Water, Oil &amp; Gas Supply, Sprinkler, Fire Hydrant, Ship Piping, ect.</li> </ul>	KS D3537, D3507 JIS G3452 BS 1387, 3601 ASTM A530 EN10255 EN10217-1
Oil Country Tubular Goods	<ul style="list-style-type: none"> <li>○ Line Pipe</li> <li>○ High Test Line Pipe</li> <li>○ Casing &amp; Tubing API 5CT</li> </ul>	<ul style="list-style-type: none"> <li>▶ For use conveying Gas, Water, and Oil, in producing operation in both Oil and Natural Gas Industries</li> </ul>	APL 5L, 5CL
Conduit Tubes	<ul style="list-style-type: none"> <li>○ Electrical Metallic Tubing</li> <li>○ Thin Wall Conduit Tubes</li> <li>○ Thick Wall Conduit Tubes</li> </ul>	<ul style="list-style-type: none"> <li>▶ For electric wiring</li> </ul>	KS C8401 JIS C8305 UL 6, 797 CSA ANSI C80.1, C80.2, C80.3
Carbon Steel Tubes for Structural Purpose	<ul style="list-style-type: none"> <li>○ Tubes for General Structural Purpose</li> <li>○ Tubes for Mechanical Structural Purpose</li> <li>○ Automobile Structural Purposes</li> <li>○ Fence Tubes</li> <li>○ Pipe Scaffolding</li> <li>○ Supports</li> <li>○ Posts for Green House</li> <li>○ Steel Pipe Pile</li> <li>○ Steel Pipe Pole</li> </ul>	<ul style="list-style-type: none"> <li>▶ For Building, Bridge, Harbor, Machinery, Steel Tower, Automobile, Bicycle, Electric Light Post, Scaffold, Steel Furniture, Support, Hand Rail and Fence etc.</li> </ul>	KS D3566, D3517 JIS G3444, G3445, A5525 ASTM A252, A500, A513
Spiral Welded Pipe	<ul style="list-style-type: none"> <li>○ Asphalt Coating Pipe</li> <li>○ Coal-tar Enamel Coating Pipe</li> <li>○ Steel Fittings for Coating Steel Pipes for Water Service</li> <li>○ Bare Spiral Pipe</li> <li>○ Steel Pipe Pile</li> </ul>	<ul style="list-style-type: none"> <li>▶ For Water, Gas, Oil, Piling &amp; other purposes such as Temporary Structures, dredging, supply &amp; exhaust piping for Stream &amp; Air.</li> </ul>	KS D3583 JIS G3457 ASTM A211, A139 AWWA C200
Carbon Steel Pipes for Pressure Service	<ul style="list-style-type: none"> <li>○ Pipes for Pressure Service</li> </ul>	<ul style="list-style-type: none"> <li>▶ For Pressure Service at the Temperature not exceeding 350°C</li> </ul>	KS D3562 JIS G3454
Carbon Steel Tubes for Heat Transfer	<ul style="list-style-type: none"> <li>○ Boiler Tubes</li> <li>○ Heat Exchanger Tubes</li> </ul>	<ul style="list-style-type: none"> <li>▶ For Heat Exchange, such as Water Tubes, Smoke Tubes, Superheater Tubes and Air Preheater Tubes of Boilers, or Heat Exchanger Tubes, Condenser Tubes and Catalyzer Tubes in the Chemical and Petroleum Industries.</li> </ul>	KS D3563 JIS G3461 ASTM A178, A214, A226, A250, A423 ASME
Carbon Steel Pipes for Ship	<ul style="list-style-type: none"> <li>○ Boiler Tubes</li> <li>○ Heat Exchanger Tubes</li> <li>○ Superheater Tubes</li> <li>○ Pipes for Pressure Piping</li> </ul>	<ul style="list-style-type: none"> <li>▶ For Boiler, Pressure Vessels, Ship and Machinery Pressure Piping System</li> </ul>	KR ABS LLOYDES DNV
Carbon Steel Pipes for Water Well	<ul style="list-style-type: none"> <li>○ Pump Column &amp; Shaft</li> <li>○ Water Well Casing, Drive Pipe, Reamed &amp; Drift Pipe, Driven Well Pipe</li> </ul>	<ul style="list-style-type: none"> <li>▶ For Water Well</li> </ul>	ASTM A554
Pre-Insulated Pipe	<ul style="list-style-type: none"> <li>○ Pre-Insulated Pipe</li> </ul>	<ul style="list-style-type: none"> <li>▶ Piping for District heating System, Central Heating System, antifreezing, Conveying Chemical Materials, Low Temperature Service, Solar Energy System.</li> </ul>	DS SWEDEN FINLAND

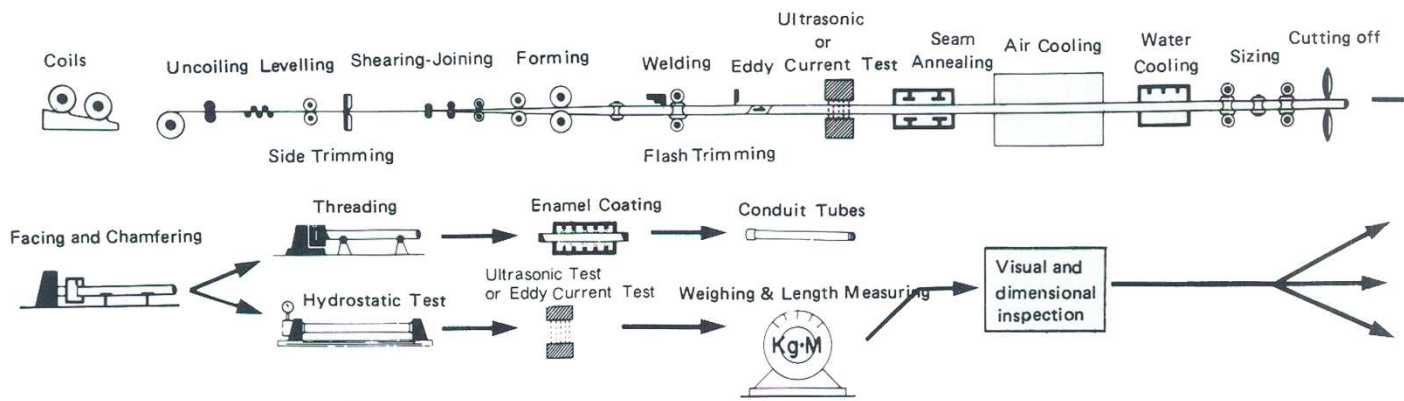
- Korean Industrial Standards (KS)
- Japanese Industrial Standards (JIS)
- British Standards (BS)
- Deutsche Industrie Normen (DIN)
- Australian Standards (AS)
- Canadian Standards Association (CSA)
- American Petroleum Institute Standards (API)

- American Society for Testing & Material Standards (ASTM)
- American National Standards Institute (ANSI)
- American Bureau of Shipping Standards (ABSS)
- Lloyd's Register of Shipping Standards (LLOYDS)
- Det Norske Veritas Standards (DS)
- Underwriters Laboratories Institute (UL)
- European Standard (EN)

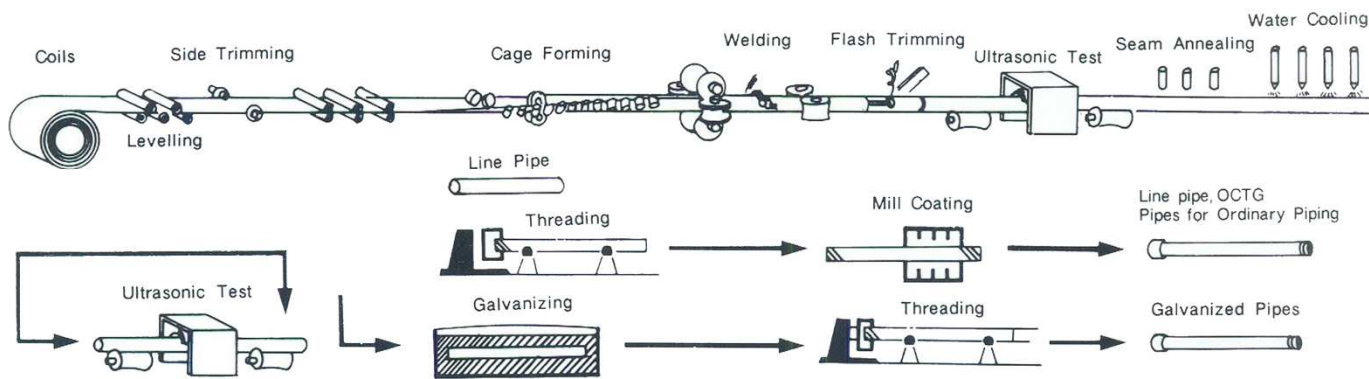


# Manufacturing Process

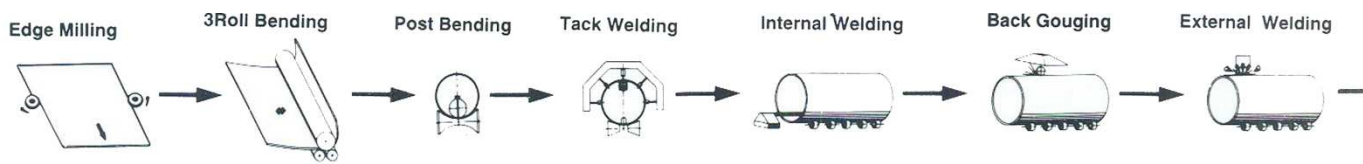
## Small Diameter Electric Welded Straight-seam Steel Pipe and Stretch Reducing Mill Pipe



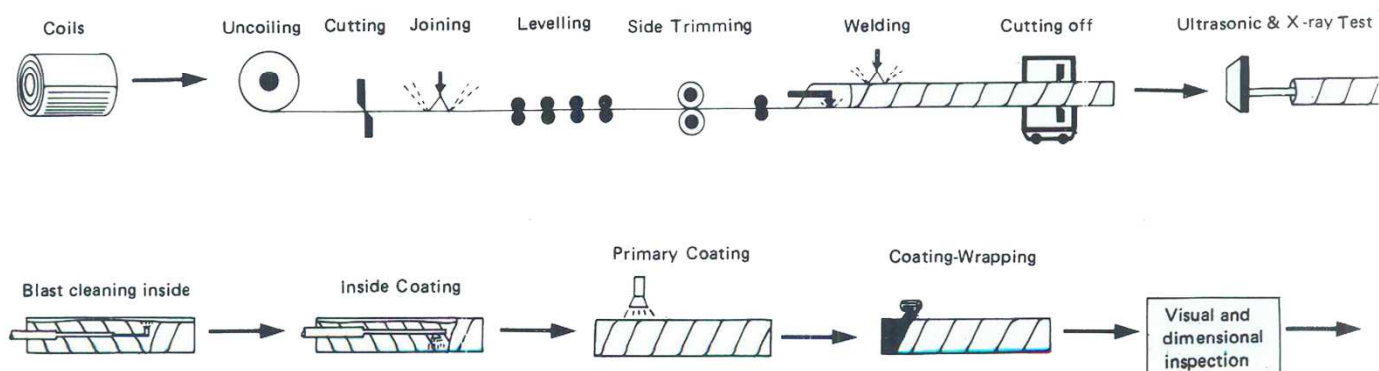
## Medium Diameter Cage Forming ERW Steel Pipe (8~20 inch O.D)



## Submerged Arc Welded Logitudinal-Seam Steel Pipe

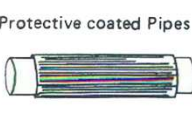
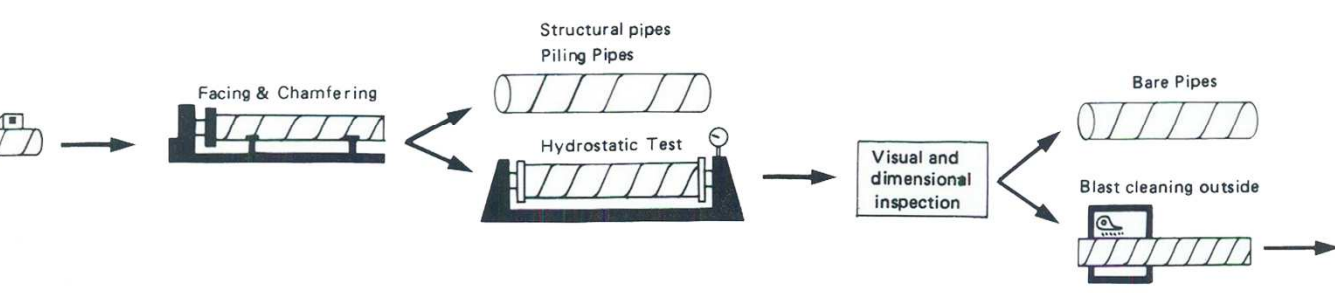
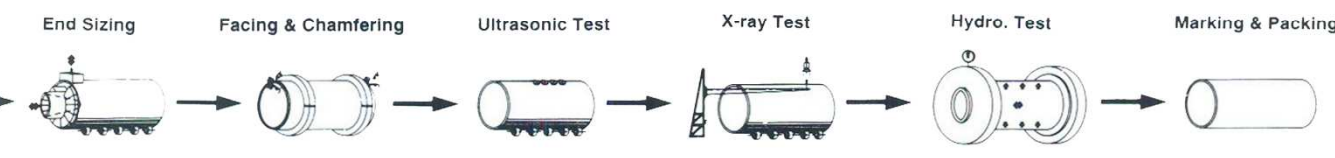
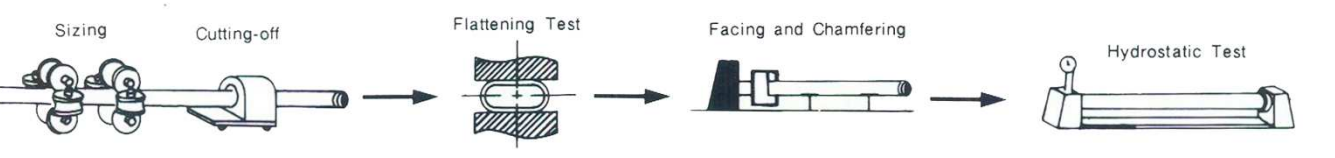
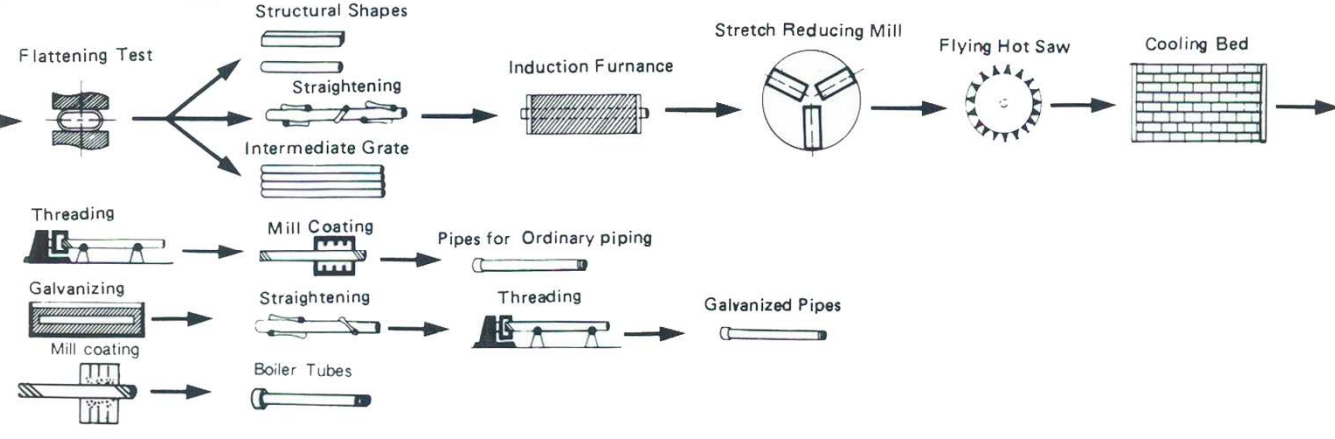


## Submerged Arc Welded Spiral-seam Steel Pipe





(3/8~8 inch O. D.)





## BSEN 10255 Galvanize Iron & Black Steel Pipe suitable for welding and threading

Series	Nominal Diameter (DN)		Specified Outside Diameter (mm)	Outside Diameter		Wall Thickness (mm)	Weight	
	(in.)	(mm)		max.(mm)	min.(mm)		Plain End (kg/m)	Threaded and Socketed (kg/m)
Type L2	1/4	8	13.5	13.6	13.2	1.8	0.52	0.52
	3/8	10	17.2	17.1	16.7	1.8	0.68	0.68
	1/2	15	21.3	21.4	21.0	2.0	0.95	0.96
	3/4	20	26.9	26.9	26.4	2.3	1.38	1.39
	1	25	33.7	33.8	33.2	2.6	1.98	2.00
	1 1/4	32	42.4	42.5	41.9	2.6	2.54	2.57
	1 1/2	40	48.3	48.4	47.8	2.9	3.23	3.27
	2	50	60.3	60.2	59.6	2.9	4.08	4.15
	2 1/2	65	76.1	76.0	75.2	3.2	5.71	5.83
	3	80	88.9	88.7	87.9	3.2	6.72	6.89
4	100	114.3	113.9	113.0	3.6	9.75	10.00	
Medium (M)	1/4	8	13.5	14.0	13.2	2.3	0.64	0.65
	3/8	10	17.2	17.5	16.7	2.3	0.84	0.85
	1/2	15	21.3	21.8	21.0	2.6	1.21	1.22
	3/4	20	26.9	27.3	26.5	2.6	1.56	1.57
	1	25	33.7	34.2	33.3	3.2	2.41	2.43
	1 1/4	32	42.4	42.9	42.0	3.2	3.10	3.13
	1 1/2	40	48.3	48.8	47.9	3.2	3.56	3.60
	2	50	60.3	60.8	59.7	3.6	5.03	5.10
	2 1/2	65	76.1	76.6	75.3	3.6	6.42	6.54
	3	80	88.9	89.5	88.0	4.0	8.36	8.53
	4	100	114.3	115.0	113.1	4.5	12.20	12.50
	5	125	139.7	140.8	138.5	5.0	16.60	17.10
6	150	165.1	166.5	163.9	5.0	19.80	20.40	
Heavy (H)	1/4	8	13.5	14.0	13.2	2.9	0.77	0.77
	3/8	10	17.2	17.5	16.7	2.9	1.02	1.03
	1/2	15	21.3	21.8	21.0	3.2	1.44	1.45
	3/4	20	26.9	27.3	26.5	3.2	1.87	1.88
	1	25	33.7	34.2	33.3	4.0	2.93	2.95
	1 1/4	32	42.4	42.9	42.0	4.0	3.79	3.82
	1 1/2	40	48.3	48.8	47.9	4.0	4.37	4.41
	2	50	60.3	60.8	59.7	4.5	6.19	6.26
	2 1/2	65	76.1	76.6	75.3	4.5	7.93	8.05
	3	80	88.9	89.5	88.0	5.0	10.30	10.50
	4	100	114.3	115.0	113.1	5.4	14.50	14.80
	5	125	139.7	140.8	138.5	5.4	17.90	18.40
6	150	165.1	166.5	163.9	5.4	21.30	21.90	

# BSEN 10217-1 Steel pipes and Tubes for Pressure Purposes (Room Temperature)

## Available Size and Mass

Nominal Size (DN) (mm)	Outside Diameter (D) (mm)	Wall thickness (mm)																	
		1.6	1.8	2	2.3	2.6	2.9	3.2	3.6	4	4.5	5	5.4	5.6	6.3	7	8	8.8	9.5
		Mass per unit length (kg/m)																	
20	26.9	0.99	1.11	1.23	1.4	1.56	1.72	1.87	2.07	2.26	2.49	2.7	2.86	2.94	3.2	3.47	3.73		
25	33.7	1.27	1.42	1.56	1.78	1.99	2.2	2.41	2.67	2.93	3.24	3.54	3.77	3.88	4.26	4.66	5.07	5.4	
32	42.4	1.61	1.8	1.99	2.27	2.55	2.82	3.09	3.44	3.79	4.21	4.61	4.93	5.08	5.61	6.18	6.79	7.29	7.71
40	48.3	1.84	2.06	2.28	2.61	2.93	3.25	3.56	3.97	4.37	4.86	5.34	5.71	5.9	6.53	7.21	7.95	8.57	9.09
50	60.3	2.32	2.6	2.88	3.29	3.7	4.11	4.51	5.03	5.55	6.19	6.82	7.31	7.55	8.39	9.32	10.3	11.2	11.9
65	76.1	2.94	3.3	3.65	4.19	4.71	5.24	5.75	6.44	7.11	7.95	8.77	9.42	9.74	10.8	12.1	13.4	14.6	15.6
80	88.9	3.44	3.87	4.29	4.91	5.53	6.15	6.76	7.57	8.38	9.37	10.3	11.1	11.5	12.8	14.3	16	17.4	18.6
100	114.3	4.45	4.99	5.54	6.35	7.16	7.97	8.77	9.83	10.9	12.2	13.5	14.5	15	16.8	18.8	21	22.9	24.6
125	139.7	5.45	6.12	6.79	7.79	8.79	9.78	10.8	12.1	13.4	15	16.6	17.9	18.5	20.7	23.2	26	28.4	30.5
150	168.3	6.58	7.39	8.2	9.42	10.6	11.8	13	14.6	16.2	18.2	20.1	21.7	22.5	25.2	28.2	31.6	34.6	37.2
200	219.1		9.65	10.7	12.3	13.9	15.5	17	19.1	21.2	23.8	26.4	28.5	29.5	33.1	37.1	41.6	45.6	49.1
250	273			13.4	15.4	17.3	19.3	21.3	23.9	26.5	29.8	33	35.6	36.9	41.4	46.6	52.3	57.3	61.7
300	323.9					20.6	23	25.3	28.4	31.6	35.4	39.3	42.4	44	49.3	55.5	62.3	68.4	73.7
350	355.6					22.6	25.2	27.8	31.3	34.7	39	43.2	46.6	48.3	54.3	61	68.6	75.3	81.1
400	406.4					25.9	28.9	31.8	35.8	39.7	44.6	49.5	53.4	55.4	62.2	69.9	78.6	86.3	93.0
450	457							35.8	40.3	44.7	50.2	56.7	60.1	62.3	70	78.8	88.6	97.3	105
500	508							39.8	44.8	49.7	55.9	62	66.9	69.4	77.9	87.7	98.6	108	117
550	559							43.9	49.3	54.7	61.5	68.3	73.7	76.4	85.9	96.6	109	119	129
600	610							47.9	53.8	59.8	67.2	74.6	80.5	83.5	93.8	106	119	130	141
700	711									69.7	78.4	87.1	94	97.4	109	123	139	152	164
800	813									79.8	89.7	99.6	108	112	125	141	159	175	188
900	914									89.8	101	112	121	125	141	159	179	196	212
1000	1016									99.8	112	125	135	140	157	177	199	219	236
1100	1118											137	148	154	173	195	219	241	260
1200	1219											150	162	168	188	212	239	263	283
1400	1422													196	220	248	279	307	331
1600	1626														252	283	319	351	379
1800	1829															319	359	395	426
2000	2032																399	439	474
2200	2235																	483	521

Note : Size outside the above size range are on an inquiry basis.

Wall thickness (mm)																				Nominal Size (DN) (mm)	Outside Diameter (D) (mm)
10	11	12.5	14.2	16	17.5	20	22.2	25	28	30	32	36	40	45	50	55	60	65			
Mass per unit length (kg/m)																					
																				20	26.9
																				25	33.7
7.99																				32	42.4
9.45	10.1	11																		40	48.3
12.4	13.4	14.7	16.1	17.5																50	60.3
16.3	17.7	19.6	21.7	23.7	25.3	27.7														65	76.1
19.5	21.1	23.6	26.2	28.8	30.8	34	36.5	39.4												80	88.9
25.7	28	31.4	35.1	38.8	41.8	46.5	50.4	55.1	59.6	62.4	64.9									100	114.3
32	34.9	39.2	43.9	48.8	52.7	59	64.3	70.7	77.1	81.2	85	92.1	98.4							125	139.7
39	42.7	48	54	60.1	65.1	73.1	80	88.3	96.9	102	108	117	127	137	146					150	168.3
51.6	56.5	63.7	71.8	80.1	87	98.2	108	120	132	140	148	163	177	193	209	223	235	247		200	219.1
64.9	71.1	80.3	90.6	101	110	125	137	153	169	180	190	210	230	253	275	296	315	333		250	273
77.4	84.9	96	108	121	132	150	165	184	204	217	230	256	280	310	338	365	390	415		300	323.9
85.2	93.5	106	120	134	146	166	183	204	226	241	255	284	311	345	377	408	437	466		350	355.6
97.8	107	121	137	154	168	191	210	235	261	278	295	329	361	401	439	477	513	547		400	406.4
110	121	137	155	174	190	216	238	266	296	316	335	374	411	457	502	545	587	628		450	457
123	135	153	173	194	212	241	266	298	331	354	376	419	462	514	565	614	663	710		500	508
135	149	168	191	214	234	266	294	329	367	391	416	464	512	570	628	684	738	792		550	559
148	162	184	209	234	256	291	322	361	402	429	456	510	562	627	691	753	814	874		600	610
173	190	215	244	274	299	341	377	423	472	504	536	599	662	739	815	890	963	1036		700	711
198	218	247	280	314	343	391	433	486	542	579	616	690	763	852	941	1028	1114	1199		800	813
223	245	278	315	354	387	441	488	548	612	654	696	780	862	964	1065	1165	1264	1361		900	914
248	273	309	351	395	431	491	544	611	682	729	777	870	963	1078	1191	1303	1415	1524		1000	1016
273	300	341	387	435	475	542	600	674	753	805	857	961	1063	1191	1317	1442	1556	1688		1100	1118
298	328	372	422	475	519	591	655	736	822	880	937	1050	1163	1303	1441	1579	1715	1850		1200	1219
348	383	435	493	555	606	692	766	861	963	1030	1097	1231	1363	1528	1692	1854	2015	2175		1400	1422
399	438	497	564	635	694	792	878	987	1103	1181	1258	1412	1565	1755	1943	2131	2317	2502		1600	1626
449	493	560	636	715	782	892	989	1112	1244	1331	1418	1592	1765	1980	2194	2406	2618	2828		1800	1829
499	548	623	707	795	869	992	1100	1237	1384	1481	1578	1772	1965	2205	2444	2682	2918	3153		2000	2032
549	604	685	778	876	957	1093	1211	1363	1524	1631	1739	1952	2165	2430	2694	2957	3218	3479		2200	2235



*Weld Quality Test*

*On-Line Ultrasonic Test*

*Off-Line Ultrasonic Test*

Nothing is more important than quality control in the production of steel pipes. SeAH Steel Corp, on the strength of production standandization and excellent quality control, has been long authorized to stamp on its products the highest quality indentifications, the Korean Industrial Standard(KS), Korean Register of Shipping(KR), American Bureau of Shipping(ABS) marks and American Petroleum Institute(API) Monogram, etc.

With complete up-to-date testing facilities installed, SeAH Steel Corp has been making every possible effort to supply high quality products which are in line with latest international developments.

## BSEN 10255

### Chemical composition (cast analysis) and mechanical properties

Chemical composition in % by mass				Mechanical properties		
C max.	Mn max.	P max.	S max.	Upper yield strength R <sub>eH</sub> min. (Mpa)	Tensile strength R <sub>m</sub> (Mpa)	Elongation A min. %
0.20	1.40	0.035	0.030	195	320 - 520	20

## BSEN 10217-1

### Chemical composition (cast analysis)

Steel grades		Chemical composition, in % by mass													
Steel name	Steel number	C max.	Si max.	Mn max.	P max.	S max.	Cr max.	Mo max.	Ni max.	Al max.	Cu max.	Nb max.	Ti max.	V max.	Cr+Cu+ Mo+Ni max.
P195TR1	1.0107	0.13	0.35	0.70	0.025	0.02	0.30	0.08	0.30	-	0.30	0.01	0.04	0.02	0.70
P195TR2	1.0108	0.13	0.35	0.70	0.025	0.02	0.30	0.08	0.30	0.02	0.30	0.01	0.04	0.02	0.70
P235TR1	1.0254	0.16	0.35	1.20	0.025	0.02	0.30	0.08	0.30	-	0.30	0.01	0.04	0.02	0.70
P235TR2	1.0255	0.16	0.35	1.20	0.025	0.02	0.30	0.08	0.30	0.02	0.30	0.01	0.04	0.02	0.70
P265TR1	1.0258	0.20	0.40	1.40	0.025	0.02	0.30	0.08	0.30	-	0.30	0.01	0.04	0.02	0.70
P265TR2	1.0259	0.20	0.40	1.40	0.025	0.02	0.30	0.08	0.30	0.02	0.30	0.01	0.04	0.02	0.70

### Mechanical properties

Steel grades		Upper yield strength R <sub>eH</sub> min. for T mm (Mpa)		Tensile Strength R <sub>m</sub> (Mpa)	Elongation A min. %	
Steel name	Steel number	T ≤ 16	16 < T ≤ 40		l	t
P195TR1	1.0107	195	185	320 - 440	27	25
P195TR2	1.0108	195	185	320 - 440	27	25
P235TR1	1.0254	235	225	360 - 500	25	23
P235TR2	1.0255	235	225	360 - 500	25	23
P265TR1	1.0258	265	255	410 - 570	21	19
P265TR2	1.0259	265	255	410 - 570	21	19

### Color Band

Grade	Color
Medium	Blue
Heavy	Red

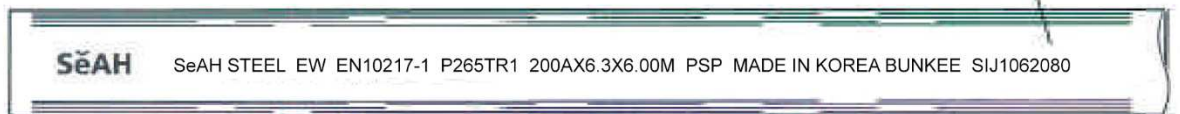
BSEN10255



Color Band

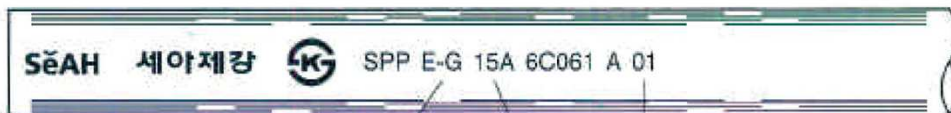
Lot No.

BSEN10217-1



\* For SAW pipe : SAWL instead of EW

KS D 3507

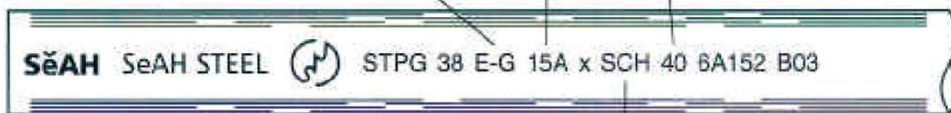


Method of Production

Nominal Bore

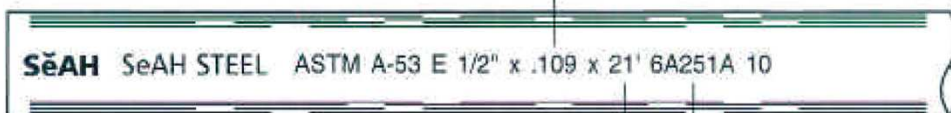
Lot No.

JIS G 3454



Number of Schedule

ASTM A 53

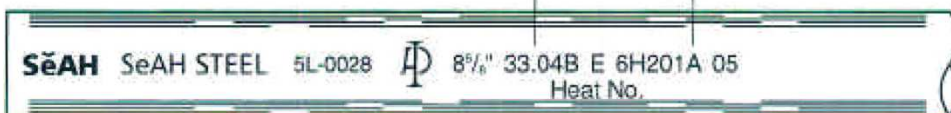


Wall Thickness

Length

Lot No.

API 5L  
GRADE B



Weight

Heat No.





Now, under the new name of  
SeAH Steel Corporation, we are starting for  
the global market of 21st century. No other  
alteration than the company name take  
place, either in the firm's capital or way of  
business.



## SeAH Steel Corporation

### ■ HEADQUARTERS

10, Bongnae-Dong 1Ga, Jung-Gu, Seoul, Korea  
TEL : (02) 3783-8114      FAX : (02) 3783-8181~2

### ■ POHANG PLANT

14-1, Jangheung-Dong, Nam-Gu, Pohang, Gyeongbuk, Korea  
TEL : (054) 271-4114      FAX : (054) 285-6401

### ■ CHANGWON PLANT

50, Ungnam-Dong, Changwon, Gyeongnam, Korea  
TEL : (055) 278-2222      FAX : (055) 289-8848

### ■ GUNSAN PLANT

1632-19, Soryong-Dong, Gunsan, Jeonbuk, Korea  
TEL : (063) 469-8500      FAX : (063) 469-8590

### ■ ANSAN PLANT

1060-2, Singil-Dong, Danwon-Gu, Ansan, Gyeonggi, Korea  
TEL : (031) 492-3371      FAX : (031) 491-6836

### ■ BUSAN OFFICE

729-1, Hakjang-Dong, Sasang-Gu, Busan, Korea  
TEL : (051) 311-4521      FAX : (051) 311-4530

### ■ GWANGJU OFFICE

913-10, Dongrim-Dong, Buk-Gu, Gwangju, Korea  
TEL : (062) 515-0890      FAX : (062) 515-0898

### ■ BEIJING OFFICE

Room No.509, Qingan Building, 27, Xiaoyun Road, Chaoyang  
District, Beijing, China  
TEL : (010) 8451-0345      FAX : (010) 8451-0347



彬記(國際)有限公司

BUN KEE (INTERNATIONAL) LIMITED

Office add. : Unit 1010-1016, Level 10, Tower II, Grand Century Place,  
193 Prince Edward Road West, Mongkok, Kowloon, H.K.  
Tel : (852) 2728 7237      Email: info@bunkeintl.com.hk

Shop : G/F, 716 Shanghai Street, Mongkok, Kowloon. Tel: (852) 2395 0181  
: G/F, 102 Thomson Road, Wanchai, H.K. Tel: (852) 2866 6001  
: G/F, 10 Tak Wah Street, Tsuen Wan, N.T. Tel: (852) 2473 3660  
: Rua Da Ribeira Do Patane No 13, Macau. Tel: (853) 2855 3693